



Calendar

- ▶ **JUNE 25** – M/V HARMONY @ T4
- ▶ **JUNE 30** – M/V KOHZAN MARU II @ T2
- ▶ **JULY 5** – INDEPENDENCE DAY OBSERVED, PGH OFFICES CLOSED -- BLOODY THURSDAY, ILWU HOLIDAY
- ▶ **JULY 13** – REGULAR COMMISSION MEETING 9:00 A.M. @ PGH MAIN OFFICES
- ▶ **JULY 14** – M/V SILVERSTONE EXPRESS @ T2

PORT OF GRAYS HARBOR

ON WASHINGTON'S PACIFIC COAST

○ ISSUE 6 | ○ VOLUME 5 | ○ June 2010

Around the Dock

PGH MISSION: TO BEST UTILIZE OUR RESOURCES TO FACILITATE, ENHANCE AND STIMULATE INTERNATIONAL TRADE, ECONOMIC DEVELOPMENT AND TOURISM FOR THE BETTERMENT OF THE REGION.

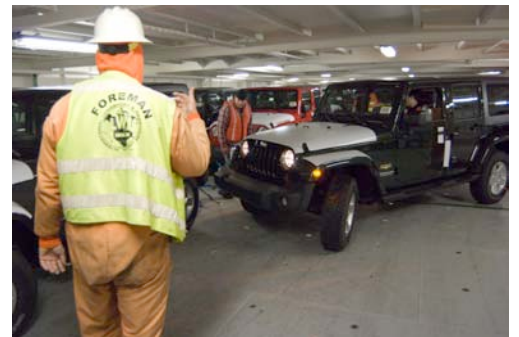
Economic Development

YTD Trade Jobs Count Tops 2009

What do the export of autos, soybean meal, logs, pulp, wood chips and liquid bulk mean to Grays Harbor? If the first five months of 2010 are any indication it means jobs. Through May, the hours worked loading vessels at the Port of Grays Harbor's marine terminals exceeded the total longshore hours worked in 2009.



Longshore crane operator Steve Kinnaman and Pasha Stevedoring and Terminals' Jeff Andrews monitor the loading of soybean meal at PGH Marine Terminal 2. Longshore workers have logged more than 24,000 hours through May 2010, exceeding all the hours worked at the Port of Grays Harbor marine terminals in 2009. Right, the ILWU Local 24 Foreman guides another member as they load vehicles aboard a vessel.



Economic Development

Walmart Announces Expansion

One of Aberdeen's largest retailers, and a tenant of the Port of Grays Harbor, Walmart, has announced plans to expand their Aberdeen store. Walmart has agreed to purchase 7 acres for \$2 million, including just over 5 acres of land the Company has under an existing lease that expires in 2042. Walmart plans to add approximately 36,000 square feet to their Aberdeen store resulting in 50 new full time associates upon completion. The store currently employs some 290 associates. Port Commissioners approved the sale of port property June 18. The sale returns the property to the tax roles while the expansion will not impact the popular waterfront walkway.





Governor Leads Ribbon Cutting @ T1

The Port of Grays Harbor's trade capacity grew on June 18th with the ribbon cutting of the new liquid bulk marine terminal, T1. The Port, with funding from the State and the primary shippers - Imperium Grays Harbor and Westway Terminal Company, expanded the former barge terminal to Panamax vessel capable, liquid bulk facility. Governor Chris Gregoire applauded the project. Pictured from left: Gary Nelson - PGH Director, PGH Commissioner Stan Pinnick, PGH Commissioner Chuck Caldwell, Governor Gregoire, Representative Dean Takko, Senator Brian Hatfield, Sid Watts - Imperium GH, Alissa Thurman - City of Hoquiam, Senator Jim Hargrove, Hoquaim Mayor Jack Durney, PGH Commissioner Jack Thompson, Representative Lynn Kessler, Scott MacKenzie - Westway, and Representative Brian Blake.

Fiscal Responsibility

PGH Staff Earns 16th Straight "Clean" Audit

The Washington State Auditor's Office has issued its reports on the financial, accountability and single audit reviews of Port of Grays Harbor records for 2009. The reports expressed "clean" opinions on:

- Financial statements
- Compliance with federal grant programs requirements (Single Audit)
- Adequate internal controls to safeguard public assets
- Compliance with state laws and regulations and the Ports own policies and procedures in areas examined
- There were no findings

This marked the 16th consecutive year the Port has had a "Clean Audit".

Audit reports for the Port of Grays Harbor and other public entities are available at the Washington State Auditor's website www.sao.wa.gov.



Celebrating 16 years of accountability, the Port of Grays Harbor Audit Team and Management from left: Diane Souron, Tracy Ewing, Shannon Anderson, Mike Johnson, Janet Blackmun-Johnson, Ken Rausch, Gary Nelson, Seth Taylor, Doll Camp, Robin Leraas, Lisa Benn and Mary Nelson.

IT ALL ADDS UP Westport Marina 2008 Fish Landings by Value

Fisherman at the Westport Marina, Washington's largest fish landing port, produced impressive numbers in 2008, according to an April 2010 article in the National Fisherman:

Dungeness crab
\$18.99 million

Albacore tuna
\$10.01 million

Pacific whiting
\$6.9 million

Pacific oyster
\$2.58 million

Pink shrimp
\$2.54 million

Sardines
\$1.01 million

Black cod
\$784,627

Nearly 500 people are employed on the commercial fishing vessels based out of Westport, while hundreds more work at the processors.

Around the Docks is a monthly newsletter produced by the Port of Grays Harbor and is available online at portofgraysharbor.com.

To join our mailing list contact Lisa Benn at lbenn@portgrays.org.