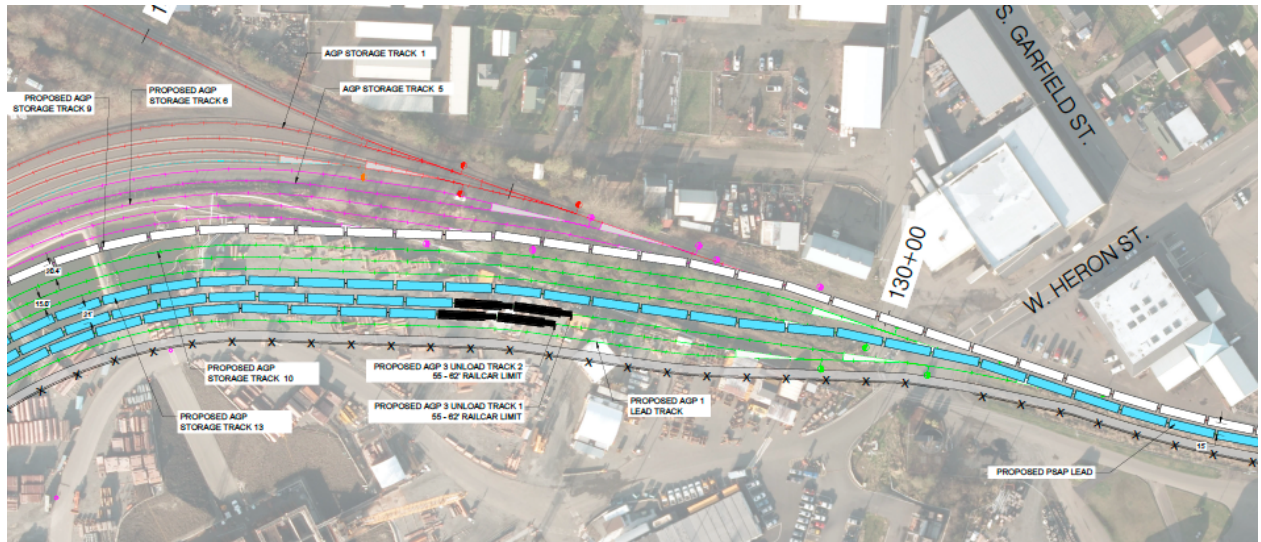


APPENDIX E: OPERATIONAL IMPROVEMENTS AND VISUALS

- **New road crossing parallels existing crossing for improved safety and flow of vehicular traffic:**
New rail lead on the west end of the Port's property crosses Port Industrial Road at an existing crossing for improved safety and minimized impacts to vehicular traffic along the industrial



route.

- **New lead and storage tracks** connect to mainline within Port property, eliminates external crossings.
- **Train fluidity is improved** with 50,240 feet of new tracks for the movement of unit trains into and through Port complex
- **New storage tracks parallel** to existing storage increases capacity by 600 additional rail cars.
- **Redevelopment of 50 acres** allows for more efficient laydown area for cargoes shipping through T4A.

