



Port of Grays Harbor

On Washington's Pacific Coast

Press Release:

April 15, 2024

Contact: Kayla Dunlap, Director of Government & Public Affairs

kdunlap@portgrays.org or 360-533-9590

For Immediate Release

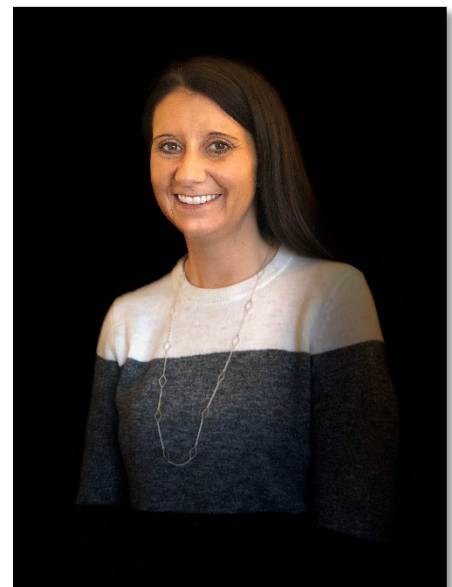
Angie Folkers selected to be the Port's next Accounting Manager

ABERDEEN, WASH. – The Port of Grays Harbor is pleased to announce that Angie Folkers will be joining the Port as the new Accounting Manager. Ms. Folkers will be replacing current Accounting Manager Lisa Benn who will be retiring in August after 40 years with the Port.

Ms. Folkers brings more than two decades of experience in government finance and state auditing. Most recently serving as the Finance Director for the City of Ocean Shores since 2016, she oversaw all finance operations including budgeting, accounting, financial reporting, and annual reporting. Prior to her work at the City, Ms. Folkers managed a team of sixteen auditors as the Audit & Program Manager for Team Olympia at the Washington State Auditor's Office for fourteen years.

"Ms. Folkers experience and knowledge will be a great addition to our finance department and an asset to the Port and those we serve," explained Executive Director Leonard Barnes. "Lisa Benn's retirement will leave big shoes to fill here at the Port but we are confident in Angie's abilities and look forward to welcoming her to the Port team."

Ms. Folkers holds a Bachelor's Degree in Accounting, with a minor in Business Administration from Saint Martin's University. She will begin her position with the Port on May 1, 2024.



Founded in 1911, the Port of Grays Harbor is one of Washington State's oldest port districts and Washington's only deep-water port located directly on the Pacific Ocean. The Port of Grays Harbor operates 4 deep-water marine terminals, the Westport Marina, Bowerman Airport, Grays Harbor ship assist services, numerous public waterfront access facilities, in addition to industrial and business parks throughout the County. The addition of Satsop Business Park increased the Port's properties to more than 1,000 acres of industrial properties and an additional 1,200 acres of sustainably managed forestland. Strategically located midway between Seattle and Portland and less than 1 ½ hours from open sea, the Port of Grays Harbor provides businesses a diverse portfolio of facilities. More information on the Port of Grays Harbor's facilities and operations is available at portofgraysharbor.com or satsop.com.